

GREECE CENTRAL SCHOOL DISTRICT

CAPITAL IMPROVEMENT PROJECT

LevelUp

LEVEL UP INFORMATION SHEET: WEEK 3

Update

A Closer Look at What's Included in the Update Portion of the Project

On December 10, Greece Central voters will have the opportunity to decide on the Level Up Capital Improvement Project. The Update portion of the proposal outlines plans to reconfigure and expand several classrooms and support service areas at 14 district schools to better meet the needs of the current student population.

What We're Proposing

Classroom Reconfiguration

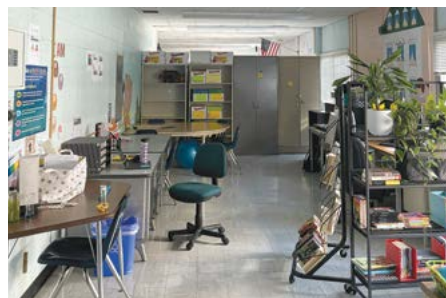
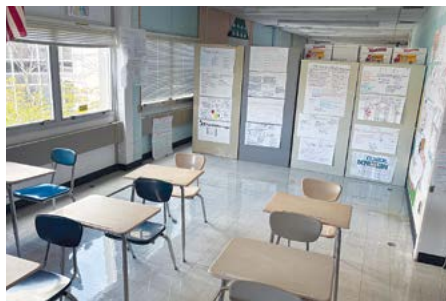
- Convert one or more standard classrooms at 14 district schools into smaller, self-contained classrooms.

Designated Support Services Space

- Use the newly reconfigured space to create designated areas for occupational and physical therapy, behavioral support, and other student support services.

Possible Elementary School Addition

- Set aside funds for a possible elementary school addition at either Brookside, Paddy Hill, or the Greece Community Early Learning Center, pending a study to determine where there is the most need. If it is determined that additional space is not an immediate need, funds will support other high-priority maintenance projects.



Existing classrooms will be reconfigured to better support current student needs.



Vote
TUESDAY
December 10

WHERE TO VOTE

Transportation and Support Services Facility, located at 1790 Latta Road.
Polls open from 6 a.m. until 9 p.m.

Voters can also choose to cast their ballot ahead of time either by absentee ballot or early mail-in ballot. You must be registered to vote in order to participate. More information is available on the district website.

Capital Work Background

Our 17 schools and other facilities occupy 2.2 million square feet and 487 acres.

On average, GCSD schools are about 60 years old and require continuous maintenance.

The last capital project was voter-approved in 2018 and will be completed in 2025.

NYS requires school districts to conduct a comprehensive Building Condition Survey every five years.

A complete school-by-school list of **Update** projects can be found on the next page.



Proposed List of Classroom Modifications and Additions

ELEMENTARY SCHOOLS

Autumn Lane

- Reconfigure rooms B6 and B7 into two standard-size classrooms and a sensory room for special education students.

Brookside

- Reconfigure rooms B6 and B7 into two standard-size classrooms and a smaller special education room.

Craig Hill

- Reconfigure rooms A7 and A9 into a larger occupational/physical therapy room and a smaller student support space.

English Village

- Reconfigure room B7 into a standard-size classroom and a smaller special education classroom.

Holmes Road

- Reconfigure rooms A6, A7, A8 and A9 into four standard-size special education classrooms and three smaller special education support spaces.
- Reconfigure the existing library space to create a smaller library and one standard-size classroom.

Lakeshore

- Reconfigure room C10 into three support services spaces.

Paddy Hill

- Reconfigure rooms 100, 101, 102, 103 and 104 into five standard-size classrooms, a smaller library, two support spaces and two individual bathrooms.

Pine Brook

- Enlarge the bathrooms in rooms B19 and B20 to better accommodate special education students.

SECONDARY SCHOOLS

Athena High

- Reconfigure rooms 131 and 131A into one standard-size classroom and three offices for instructional support staff.
- Reconfigure rooms 153, 153A, 153B, 155, 155A, and 155B to enhance their suitability for special education programming.
- Reconfigure rooms 274, 274A and 276 into two standard-size classrooms and three to four offices for instructional support staff.

Athena Middle

- Reconfigure rooms 338, 338A and 338B into one standard-size classroom and four offices for instructional support staff.

Arcadia High

- Modify the main entrance vestibule for enhanced security.

- Reconfigure rooms 140-143 to create multiple special education classrooms and associated support services spaces.

Arcadia Middle

- Reconfigure rooms 221 and 223 to create four smaller special education classrooms.

Odyssey Academy

- Add a secure vestibule for student arrival and dismissal.
- Reconfigure rooms 134A, 135, 135A, 136, 137 and 138 to create multiple special education classrooms and associated support services spaces.
- Reconfigure rooms G18 and G19 into two equal sized classrooms.

Olympia School

- Reconfigure room 305 into two equal sized special education classrooms.

How does the Level Up project address the needs of our current school population?

The number of students with disabilities has grown significantly, both in Greece and across the country. This is due to factors like reduced stigma, a broader definition of educational disabilities, and better diagnosis of conditions such as autism and anxiety. Many of our classrooms were originally designed solely for general education students. The Level Up project will create dedicated spaces for self-contained special education classes and related support services, while preserving the majority of classrooms for the use of general education students.

Please note: The specific classrooms designated for renovation are subject to change based on evolving needs and priorities.